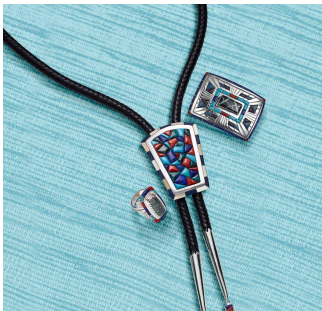




## Nighthorse MEN'S JEWELRY JEWELER



Ben Nighthorse Jewelry can be found exclusively at Sorrel Sky Gallery. For [over 50 years](#), Northern Cheyenne artist Ben Nighthorse has created beautiful, award winning jewelry using the highest quality precious and semi-precious stones, including [diamonds](#), turquoise and lapis set in [18 karat gold](#) and the [finest sterling silver](#). His love of [horses](#) and [animals](#), inspired him to create new innovative designs. American Indians often believe that a person can inherit some of an animal's virtues by wearing an image of it. That is one reason why noble animals have always played an important role in Nighthorse Designs.

Sorrel<sup>★</sup>Sky  
GALLERY

125 W. Palace Ave. | Santa Fe, NM 87501 | 505.501.6555  
828 Main Ave. | Durango, CO 81301 | 970.247.3555

[www.SorrelSky.com](http://www.SorrelSky.com)